

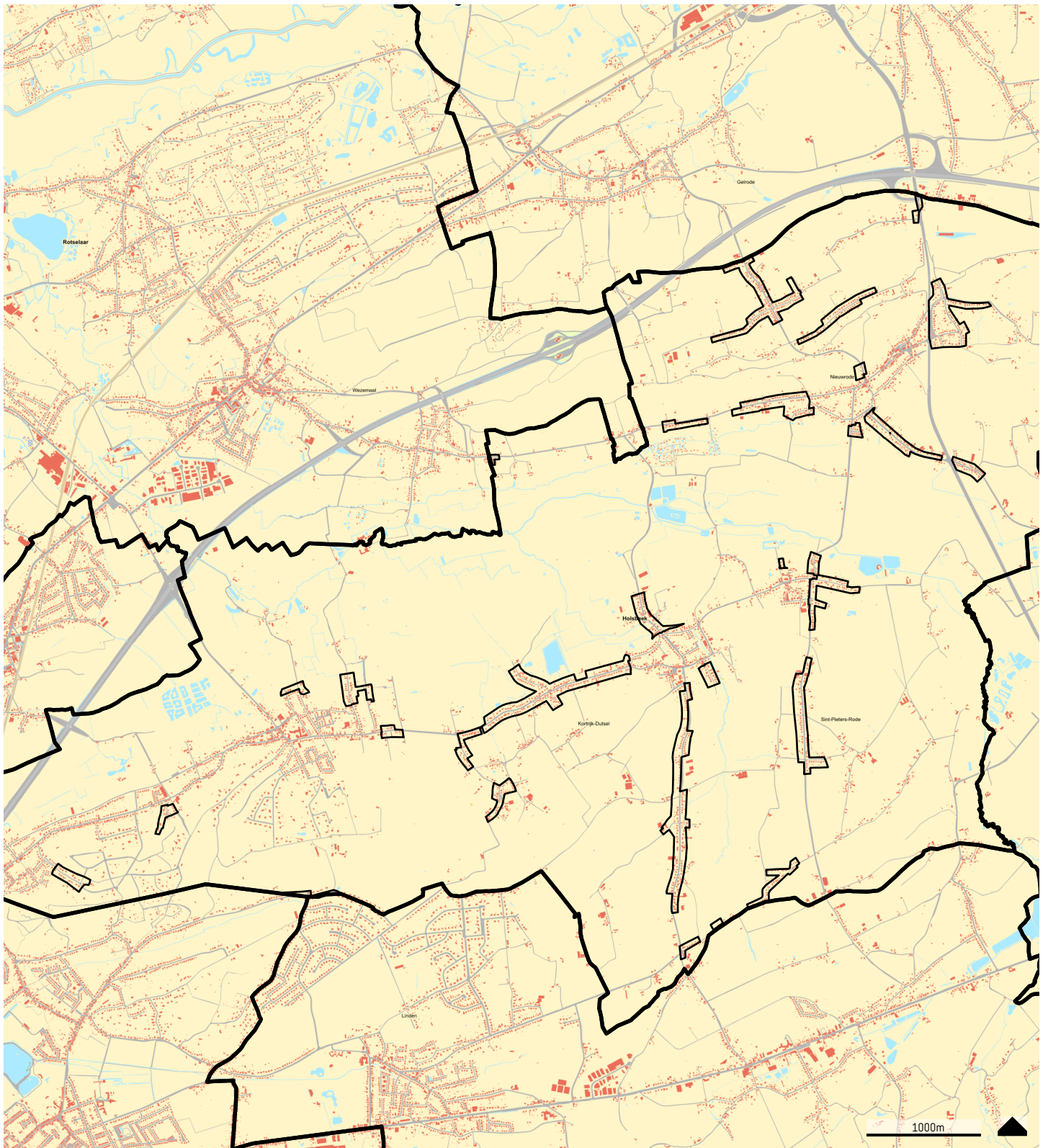


Bron: Esri, HERE, Garmin, (C) OpenStreetMap contributors, and the GIS user community - download WFS-data dd. 4/12/2023



RUP woongebieden buiten de dorpskernen  
 Holsbeek  
**1**  
**LIGGINGSPLAN**

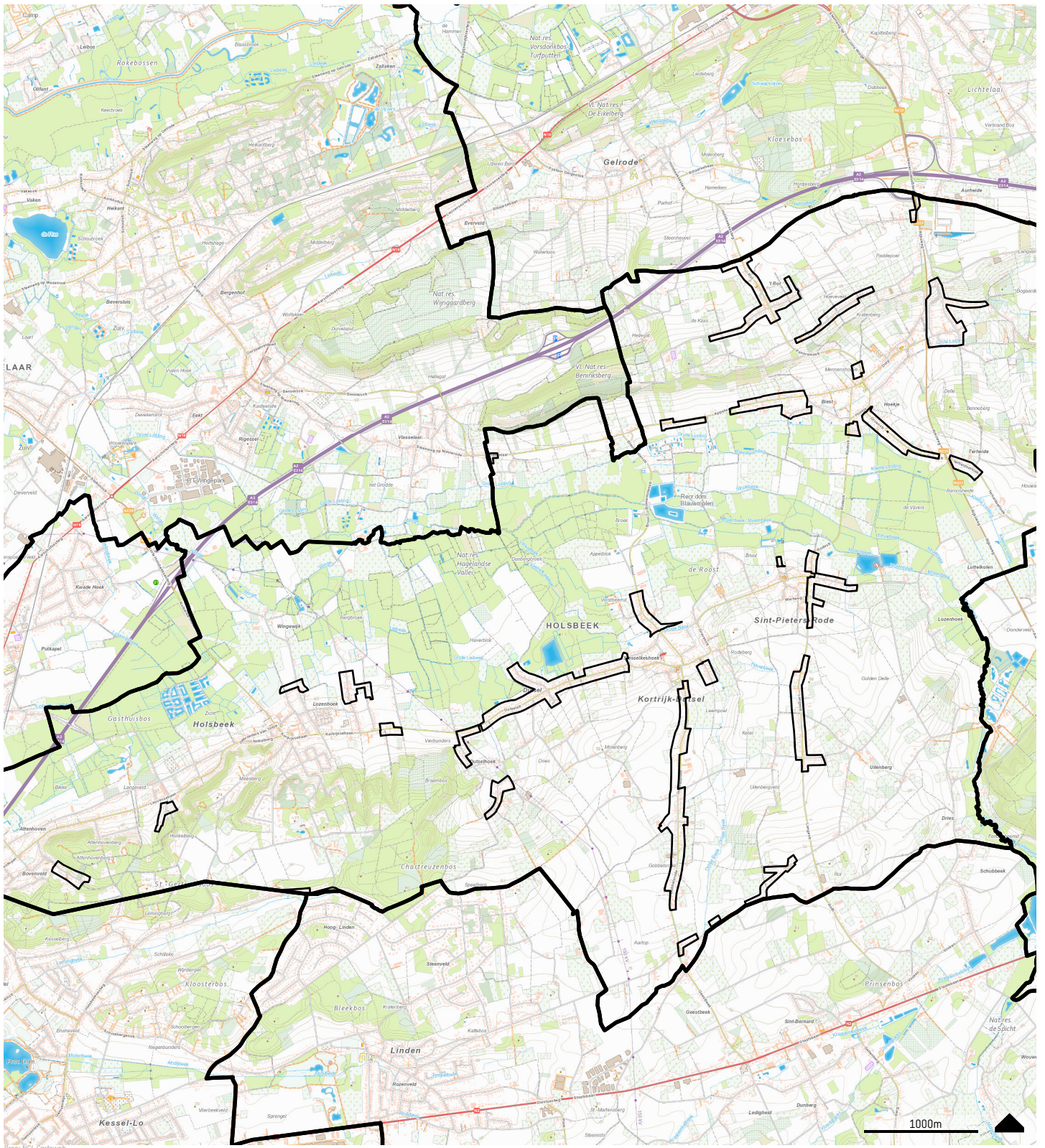
-  gemeentegrens
-  plangebied



bron: WMS GRB


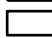
RUP woongebieden buiten de dorpskernen  
 Holsbeek  
 2  
 GRB

-  gemeentegrens
-  plangebied



Bron: NGL, Cartoweb

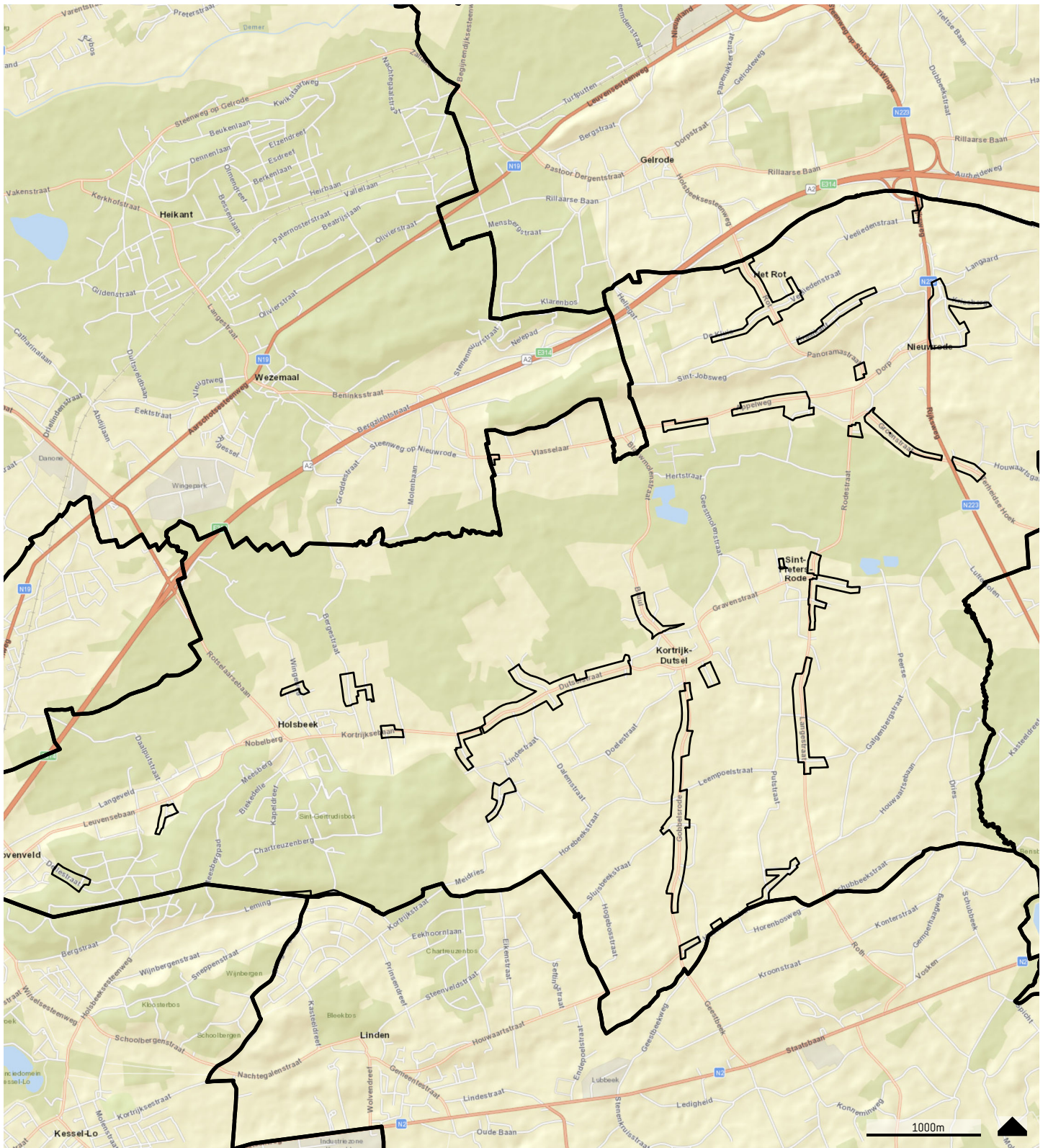
RUP woongebieden buiten de dorpskernen  
Holsbeek  
**3**  
**TOPOKAART**

-  gemeentegrens
-  plangebied




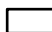
bron: Orthofotomateriaal, middelenstang, winteropnamen, kleur, meest recent, Vlaanderen

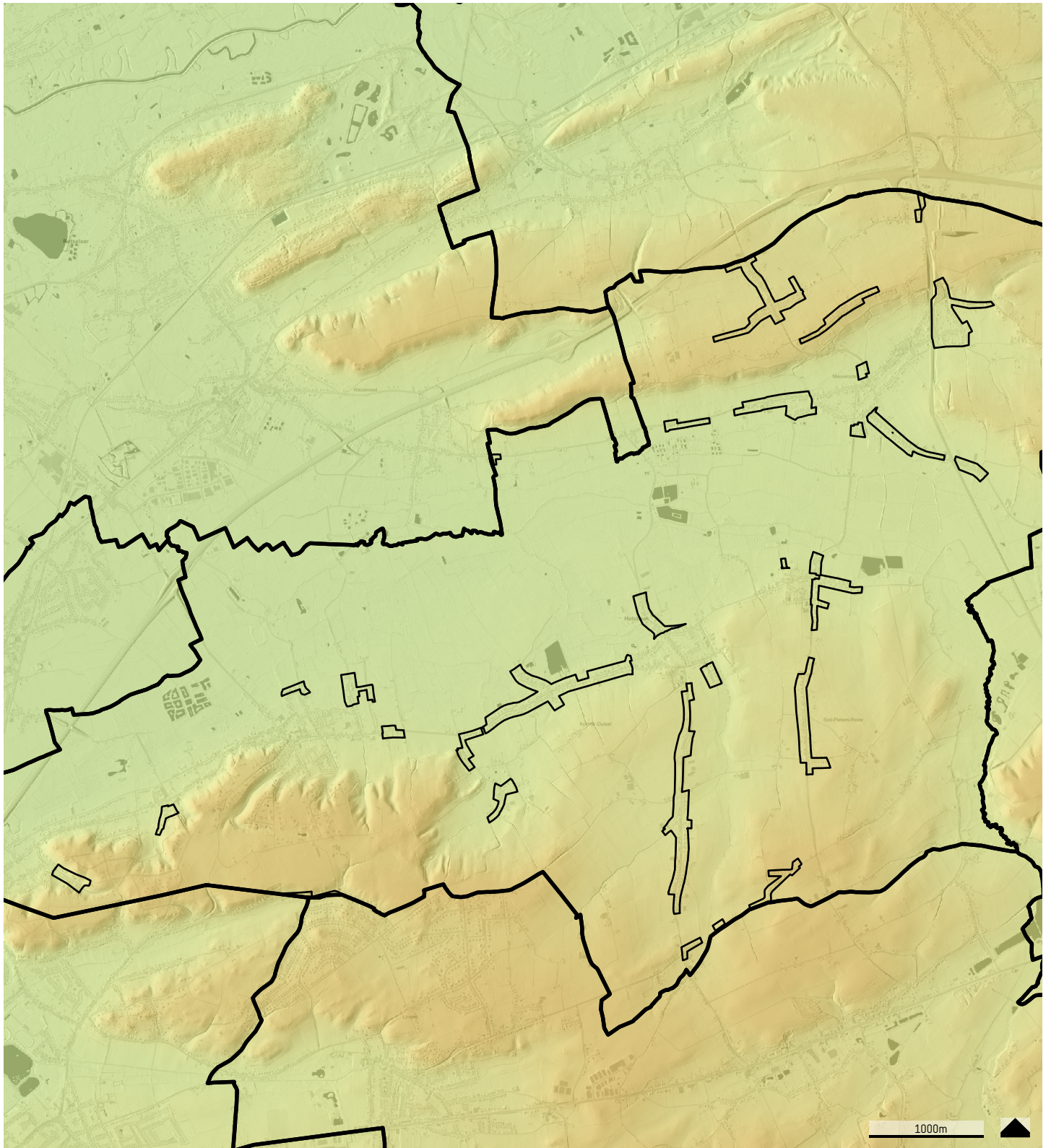
RUP Bouwshift  
Holsbeek  
4  
**ORTHOFOTO**



Bron: Esri, HERE, Garmin, USGS, Intermap, INCREMENT P, NRCan, Esri Japan, METI, Esri China (Hong Kong), Esri Korea, Esri (Thailand), NGCC, (c) OpenStreetMap contributors, and the GIS User Community

RUP woongebieden buiten de dorpskernen  
Holsbeek  
**5**  
**STRATENATLAS**

-  gemeentegrens
-  plangebied





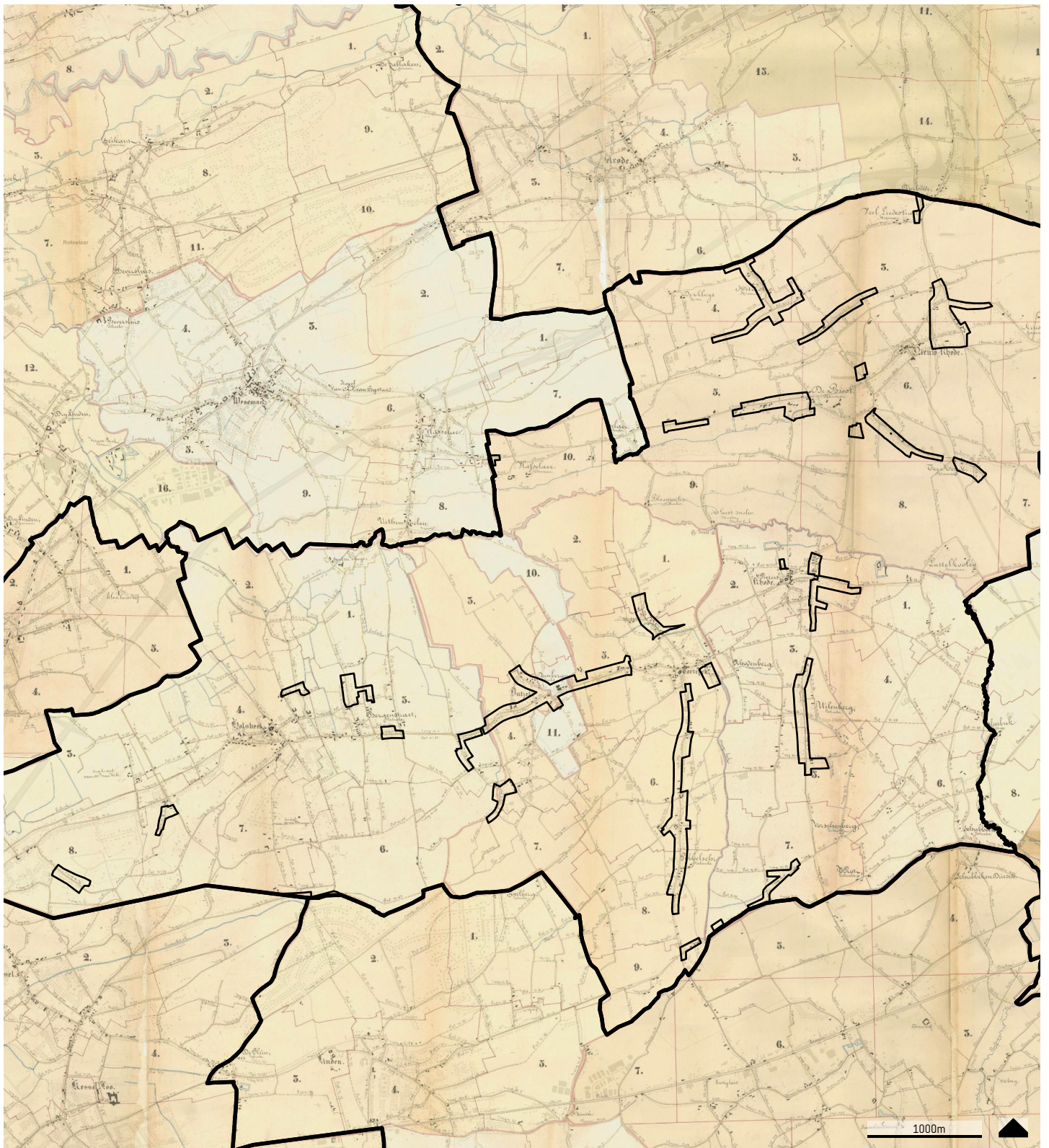
Bron: WMS GIS; WMS AIV; Digitaal Hoogtemodel Vlaanderen II

RUP woongebieden buiten de dorpskernen  
Holsbeek

6



**DIGITAAL HOOGTEMODEL**

-  gemeentegrens
-  plangebied



Bron: Informatie Vlaanderen, WMS Roadpleegdienst voor historische cartografie, WMS orb



RUP woongebieden buiten de dorpskernen  
Holsbeek  
7  
**ATLAS DER BUURTWEGEN**

-  plangebied
-  gemeentegrens

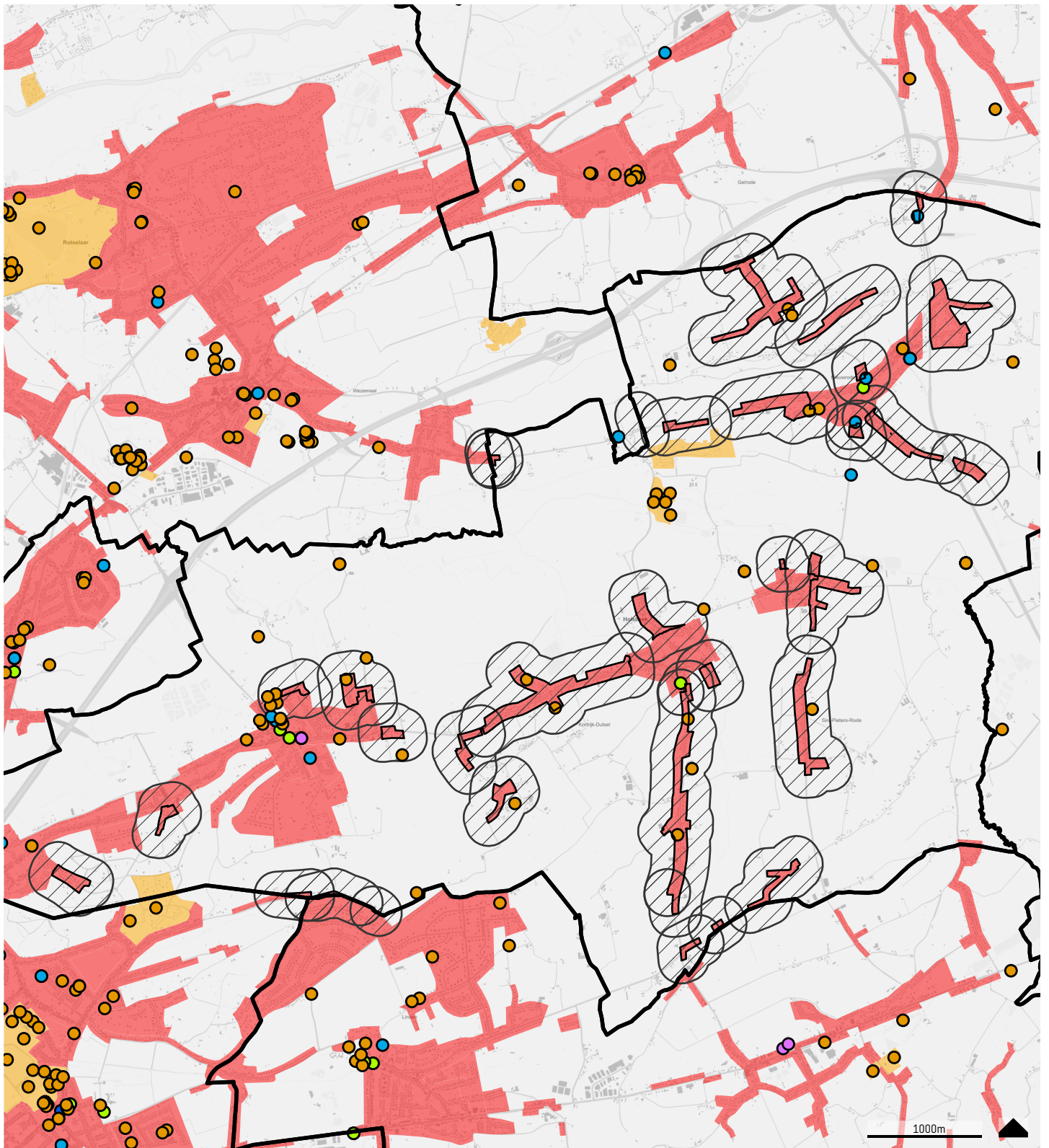


Bron: Informatie Vlaanderen, WPS Roadplanningdienst voor historische cartografie

RUP woongebieden buiten de dorpskernen  
 Holsbeek  
 8  
**FERRARISKAART**

-  plangebied
-  gemeentegrens





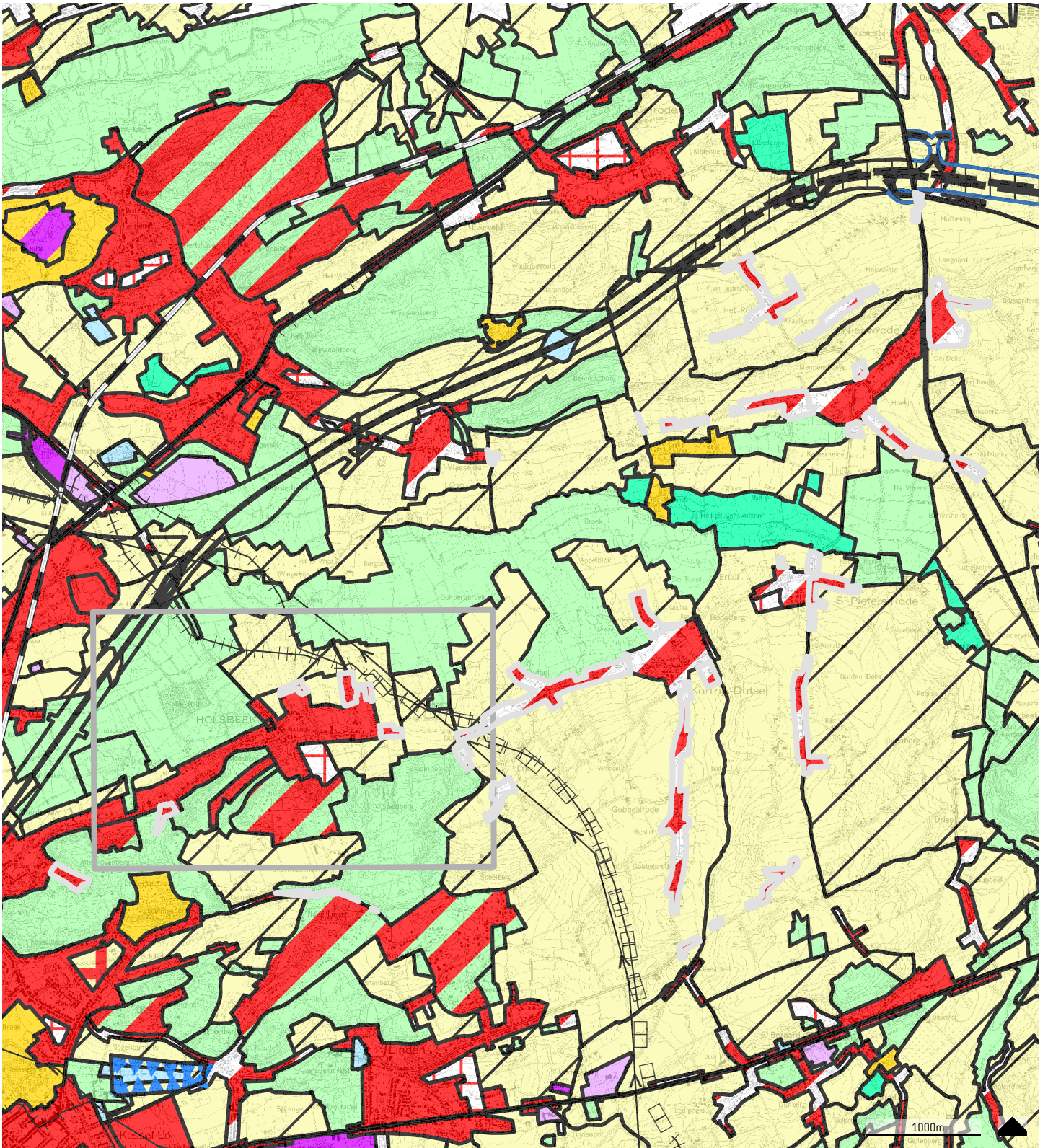
bron: WFS GRB, WFS MercatorNet, Poi beopunt - download WFS-dota dd. 4/12/2023

RUP woongebieden buiten de dorpskernen  
Holsbeek

9

**EXTERNE  
MENSVEILIGHEID**

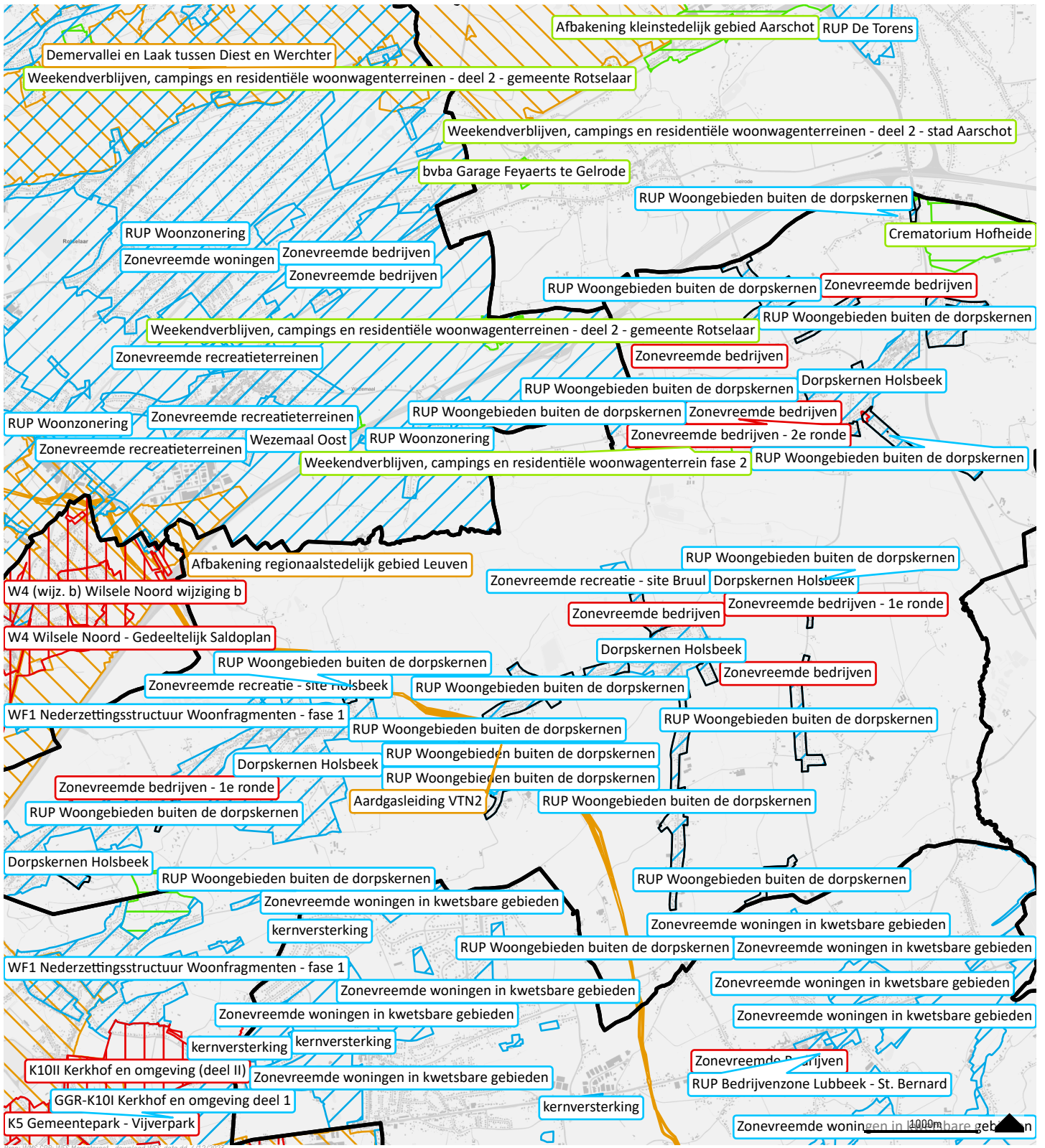
- |                             |                               |
|-----------------------------|-------------------------------|
| gemeentegrens               | Recreatiegebied (gewestplan)  |
| plangebied                  | woongebied (gewestplan)       |
| <u>Voorzieningen:</u>       | <u>Seveso-bedrijven:</u>      |
| Ziekenhuizen (alg/psych)    | Hogedrempel Seveso-bedrijven  |
| Oudervoorzieningen (RH/WZC) | Lagedrempel Seveso-bedrijven  |
| Onderwijs                   | <u>Seveso consultiezones:</u> |
| Kinderopvang                | Hogedrempel Seveso-bedrijven  |
| Recreatie                   | Lagedrempel Seveso-bedrijven  |
| projectgebied buffer 200m   |                               |



bron: WRS-01a, WRS-Mercolnet (gewestplan toestand 01/01/2002, correctie 14/12/2016) - download WRS-data dd. 4/12/2023

- |                                                                                                                                                                                                                                                                                                                                                                                                                                                                                                                                                                                                                                                                                                                                                                                                                                                                                                                                     |                                                                                                                                                                                                                                                                                                                                                                                                                                                                                                                                                                                                                                                                                                                                                                                                         |
|-------------------------------------------------------------------------------------------------------------------------------------------------------------------------------------------------------------------------------------------------------------------------------------------------------------------------------------------------------------------------------------------------------------------------------------------------------------------------------------------------------------------------------------------------------------------------------------------------------------------------------------------------------------------------------------------------------------------------------------------------------------------------------------------------------------------------------------------------------------------------------------------------------------------------------------|---------------------------------------------------------------------------------------------------------------------------------------------------------------------------------------------------------------------------------------------------------------------------------------------------------------------------------------------------------------------------------------------------------------------------------------------------------------------------------------------------------------------------------------------------------------------------------------------------------------------------------------------------------------------------------------------------------------------------------------------------------------------------------------------------------|
| <ul style="list-style-type: none"> <li>plangebied</li> <li>projectgebied</li> <li>150c - bestaande hoofdverkeerswegen</li> <li>150d - aan te leggen hoofdverkeerswegen</li> <li>150e - spoorwegen: bestaande lijnen</li> <li>150g - transportleidingen: bestaande afzonderlijke leidingen</li> <li>150h - transportleidingen: aan te leggen afzonderlijke leidingen</li> <li>150j - transportleidingen: aan te leggen leidingstraten</li> <li>150k - bestaande hoogspanningsleidingen</li> <li>1600 - omranding waterwinningsgebieden</li> <li>1200 - ontginningsgebieden</li> <li>1501 - aan te leggen autosnelwegen</li> <li>1506 - reservatiegebieden</li> <li>1600 - omranding waterwinningsgebieden</li> <li>1800 - op te heffen reservatiestrook</li> <li>0100 - woongebieden</li> <li>0101 - woongebieden met cultureel- historische en/of esthetische waarde</li> <li>0102 - woongebieden met landelijk karakter</li> </ul> | <ul style="list-style-type: none"> <li>0104 - woonpark</li> <li>0105 - woonuitbreidingsgebieden</li> <li>0181 - woonreservegebieden</li> <li>0200 - gebieden voor openbaar nut</li> <li>0400 - recreatiegebieden</li> <li>0401 - gebieden voor dagrecreatie</li> <li>0500 - parkgebieden</li> <li>0600 - bufferzones (T)</li> <li>0700 - groengebieden</li> <li>0701 - natuurgebieden (N)</li> <li>0702 - natuurgebieden met wetenschappelijke waarde of natuurreservaten</li> <li>0800 - bosgebieden</li> <li>0900 - agrarische gebieden</li> <li>0901 - landschappelijk waardevol agrarische gebieden</li> <li>0910 - agrarische gebieden met ecologisch belang</li> <li>1000 - industriegebieden</li> <li>1100 - ambachtelijke bedrijven en kmo's</li> <li>1500 - bestaande autosnelwegen</li> </ul> |
|-------------------------------------------------------------------------------------------------------------------------------------------------------------------------------------------------------------------------------------------------------------------------------------------------------------------------------------------------------------------------------------------------------------------------------------------------------------------------------------------------------------------------------------------------------------------------------------------------------------------------------------------------------------------------------------------------------------------------------------------------------------------------------------------------------------------------------------------------------------------------------------------------------------------------------------|---------------------------------------------------------------------------------------------------------------------------------------------------------------------------------------------------------------------------------------------------------------------------------------------------------------------------------------------------------------------------------------------------------------------------------------------------------------------------------------------------------------------------------------------------------------------------------------------------------------------------------------------------------------------------------------------------------------------------------------------------------------------------------------------------------|

RUP woongebieden buiten de  
Holsbeek  
**10**  
**GEWESTPLAN**



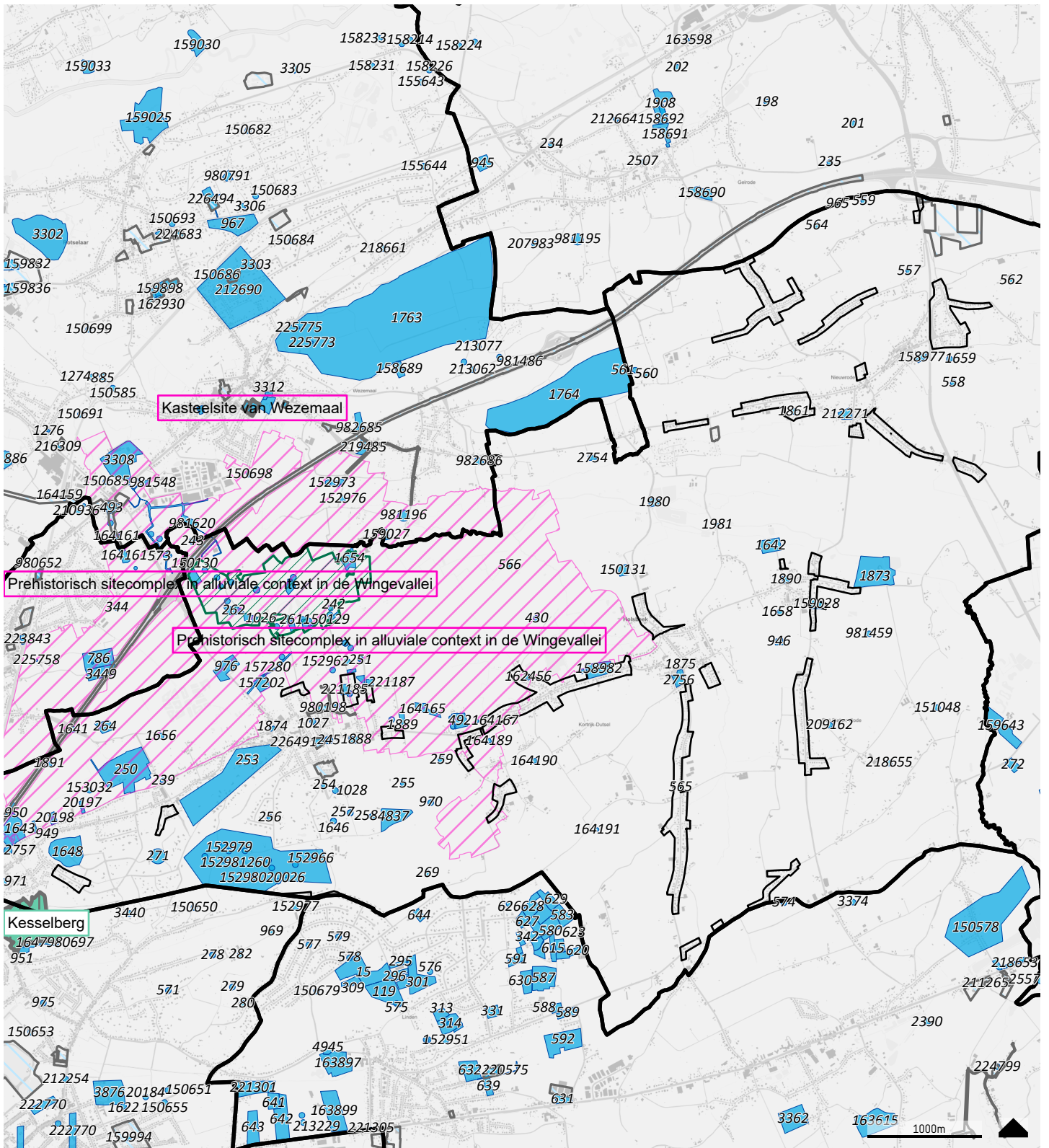
bron: WFS G18; WFS Mercolanet; download WFS-G18a.dwg, 4/12/2023

## RUP woongebieden buiten de dorpskernen Holsbeek

11

## BPA's en RUP's

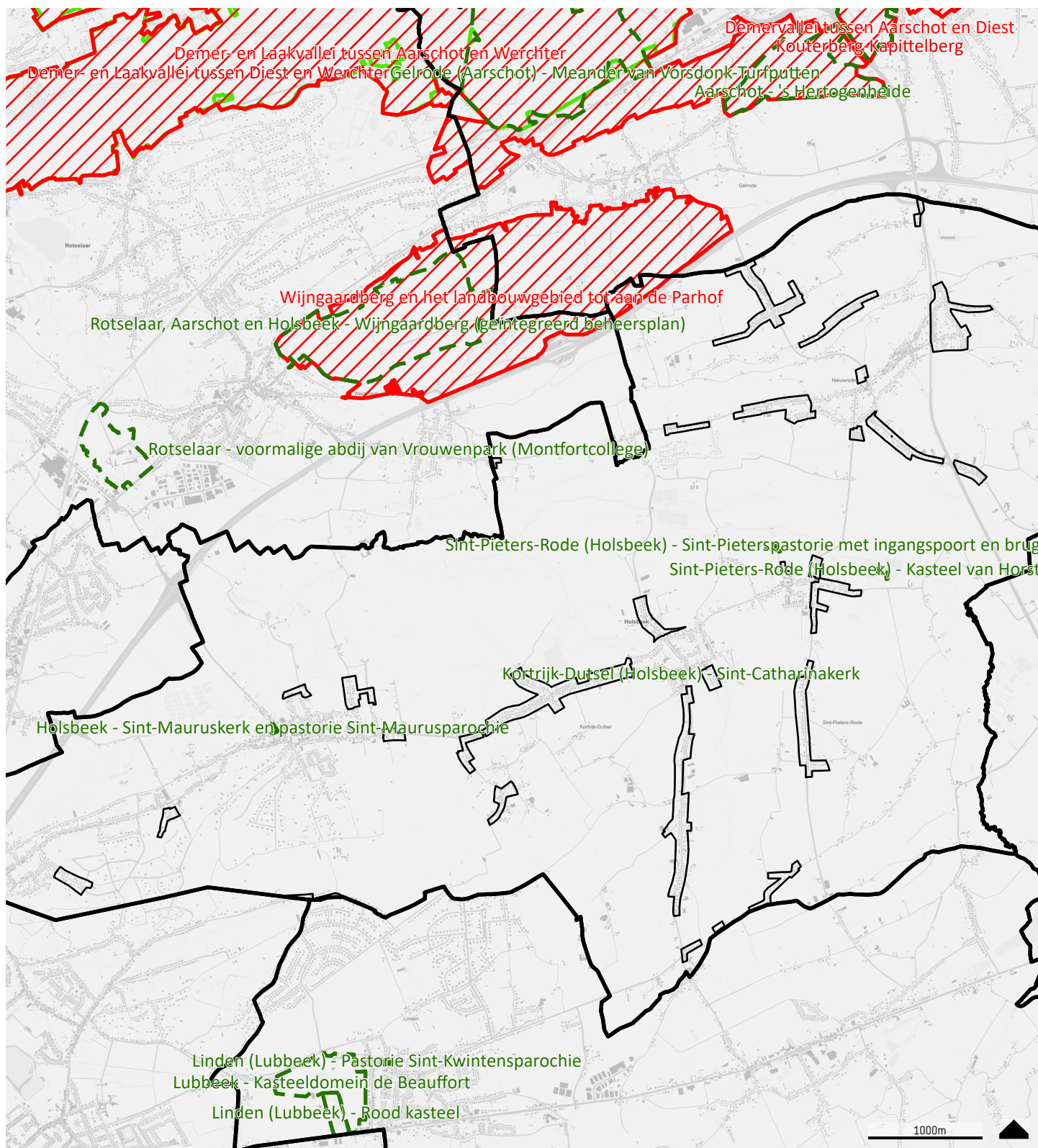
- gemeentegrens
- plangebied
- Bestemmingsplannen**
- BPA
- Gemeentelijk RUP
- Provinciaal RUP
- Gewestelijk RUP



bron: WFS GRB; WFS ParcelsNet; CAI 11/2021 - download WFS-data dtt. 4/12/2023

RUP woongebieden buiten de dorpskernen  
Holsbeek  
**12**  
**ARCHEOLOGIE**

- plangebied
- gemeentegrens
- archeologische sites (beschermd onroerend erfgoed)
- gebieden geen archeologie (onroerend erfgoed)
- archeologische zones (vastgestelde inventaris onroerend erfgoed)
- archeologie elementen (wetenschappelijke inventaris onroerend erfgoed)
- archeologie gehelen (wetenschappelijke inventaris onroerend erfgoed)
- archeologische elementen (CAI)








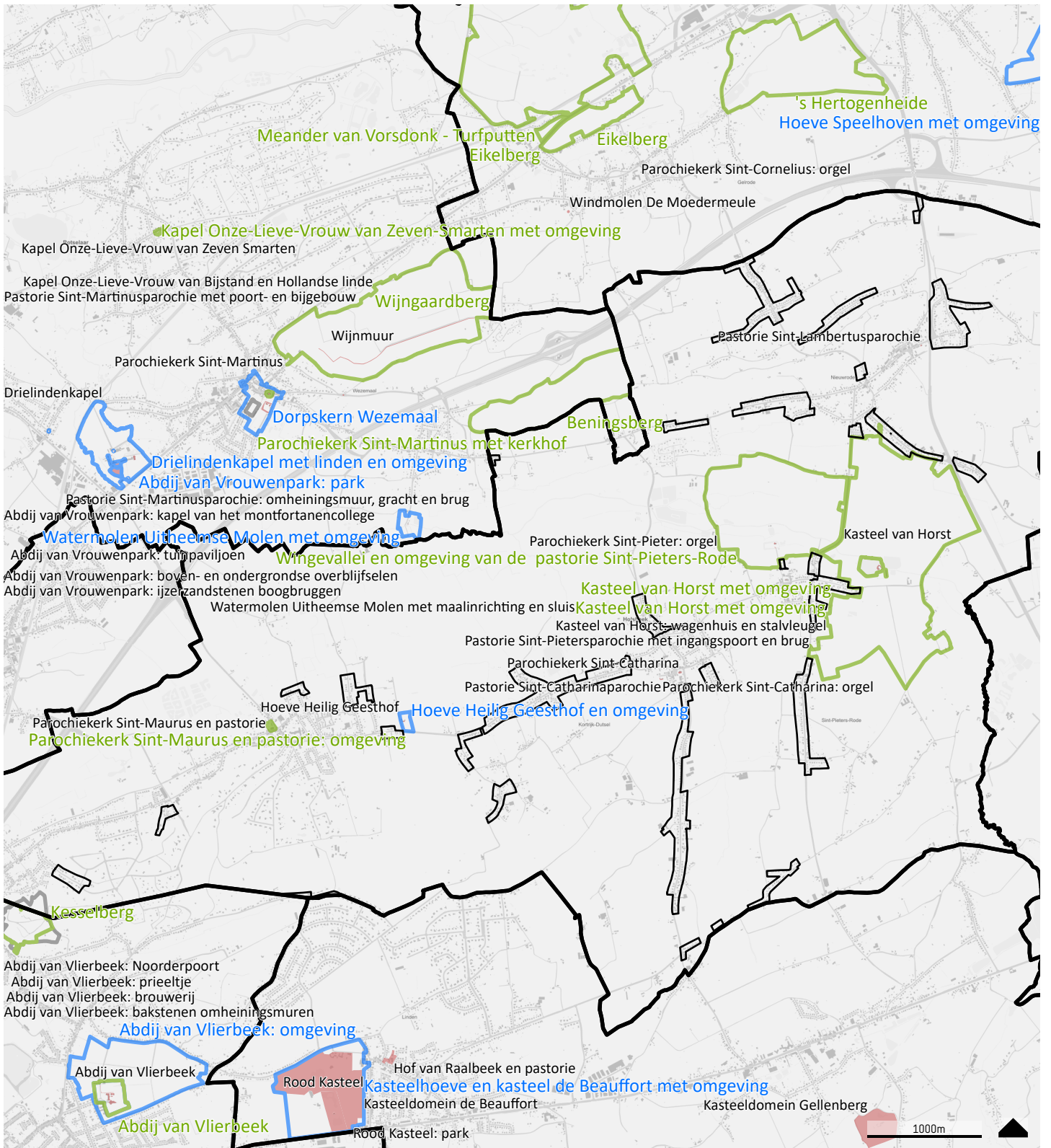
bron: WMS SRB, WFS Mercator/et - download WFS-data dd. 4/12/2023

RUP woongebieden buiten de dorpskernen  
Holsbeek

13

## ONROEREND ERFGOED LANDSCHAPSATLAS

-  plangebied
-  gemeentegrens
-  beheersplannen
-  landschapsatlas vastgestelde inventaris
-  erfgoedlandschappen (indicatief)



Bron: WMS SRB, WFS Mercator/Net - download WFS-data dd. 4/12/2023

RUP woongebieden buiten de dorpskernen  
Holsbeek

14

**ONROEREND ERFGOED  
BESCHERMINGEN**

plangebied

gemeentegrens

Beschermd onroerend erfgoed (aanduidingsobjecten)

overgangszones

cultuurhistorische landschappen

stads-en dorpsgezichten

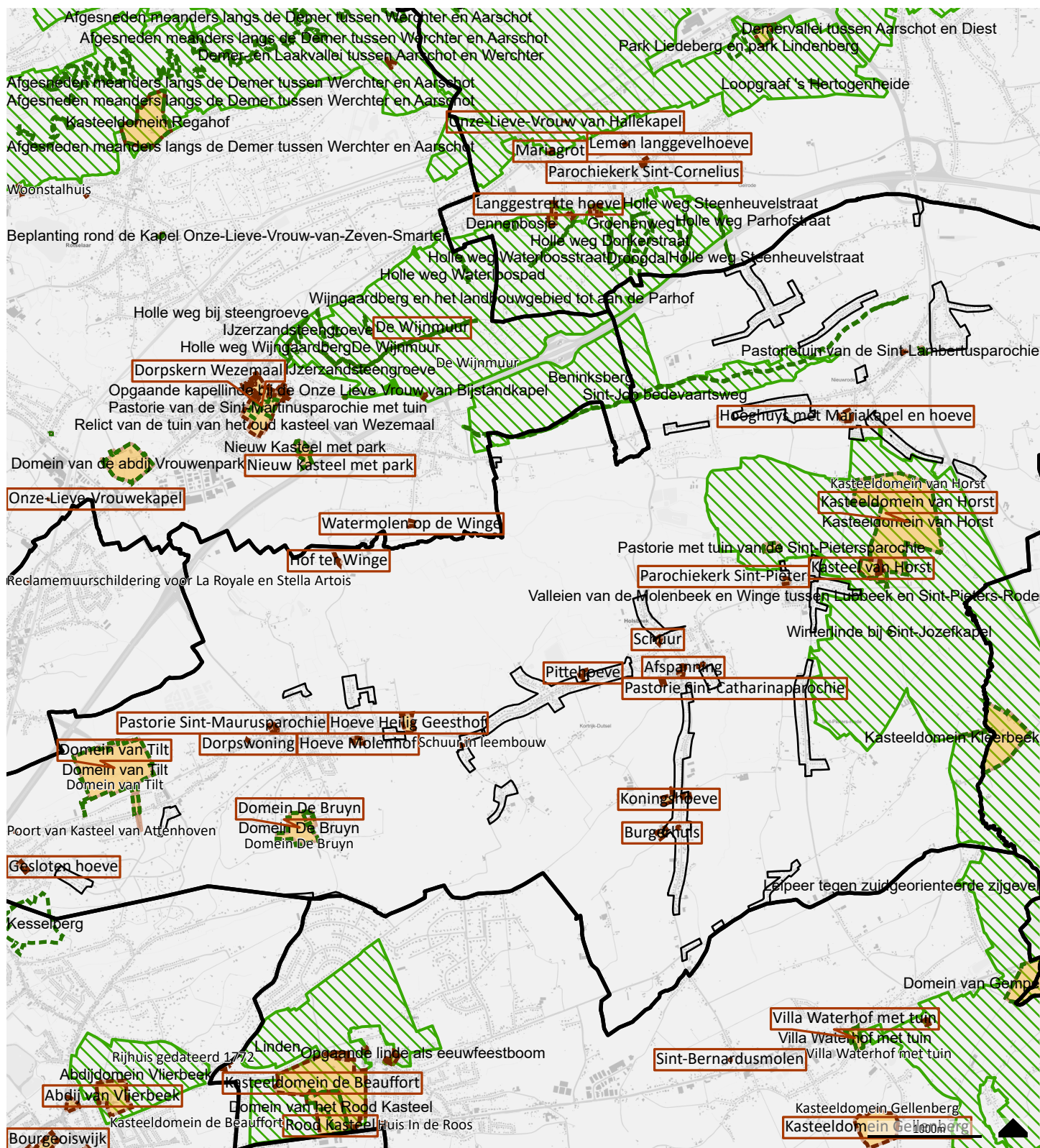
archeologische sites

monumenten

Unesco werelderfgoed

Unesco Werelderfgoed - bufferzones

Unesco Werelderfgoed - kernzones

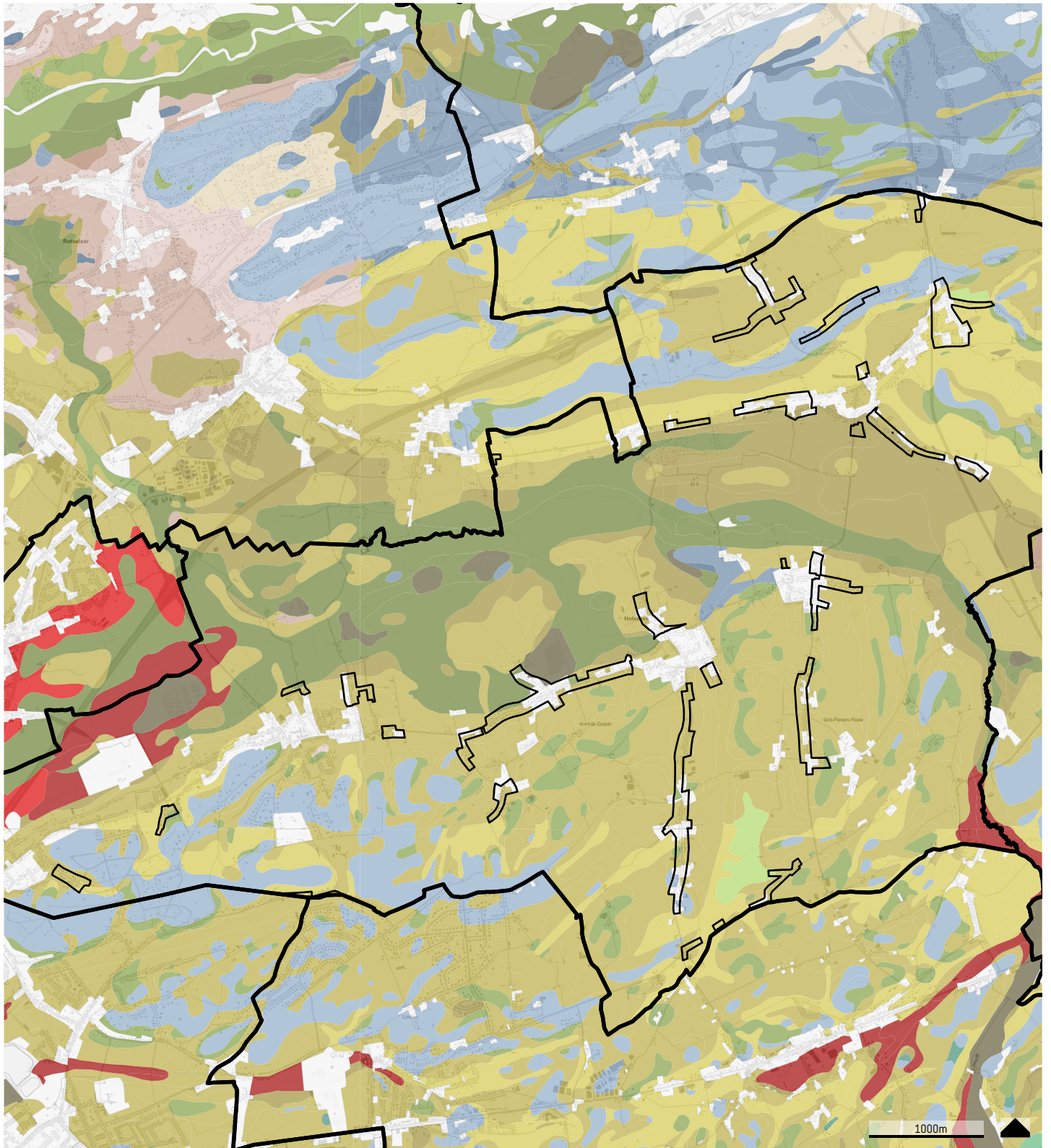


bron: WFS onb, WFS Merckatorner - download WFS-data dd. 4/12/2023

- plangebied
- gemeentegrens
- wetenschappelijke inventarissen (niet vastgestelde erfgoedobjecten)
- landschappelijk erfgoed - elementen
- bouwkundig erfgoed - elementen
- vastgestelde inventarissen (aanduidingsobjecten)
- bouwkundig erfgoed
- historische tuinen en parken
- houtige beplantingen
- wetenschappelijke inventarissen (niet vastgestelde erfgoedobjecten)
- bouwkundig erfgoed - gehelen
- landschappelijk erfgoed - gehelen

RUP woongebieden buiten de dorpskernen  
Holsbeek

**15**  
**ONROEREND ERFGOD**  
**INVENTARISSEN**



Bron: WMS GRB, DOV Bodemkaart 2.0 (2017)

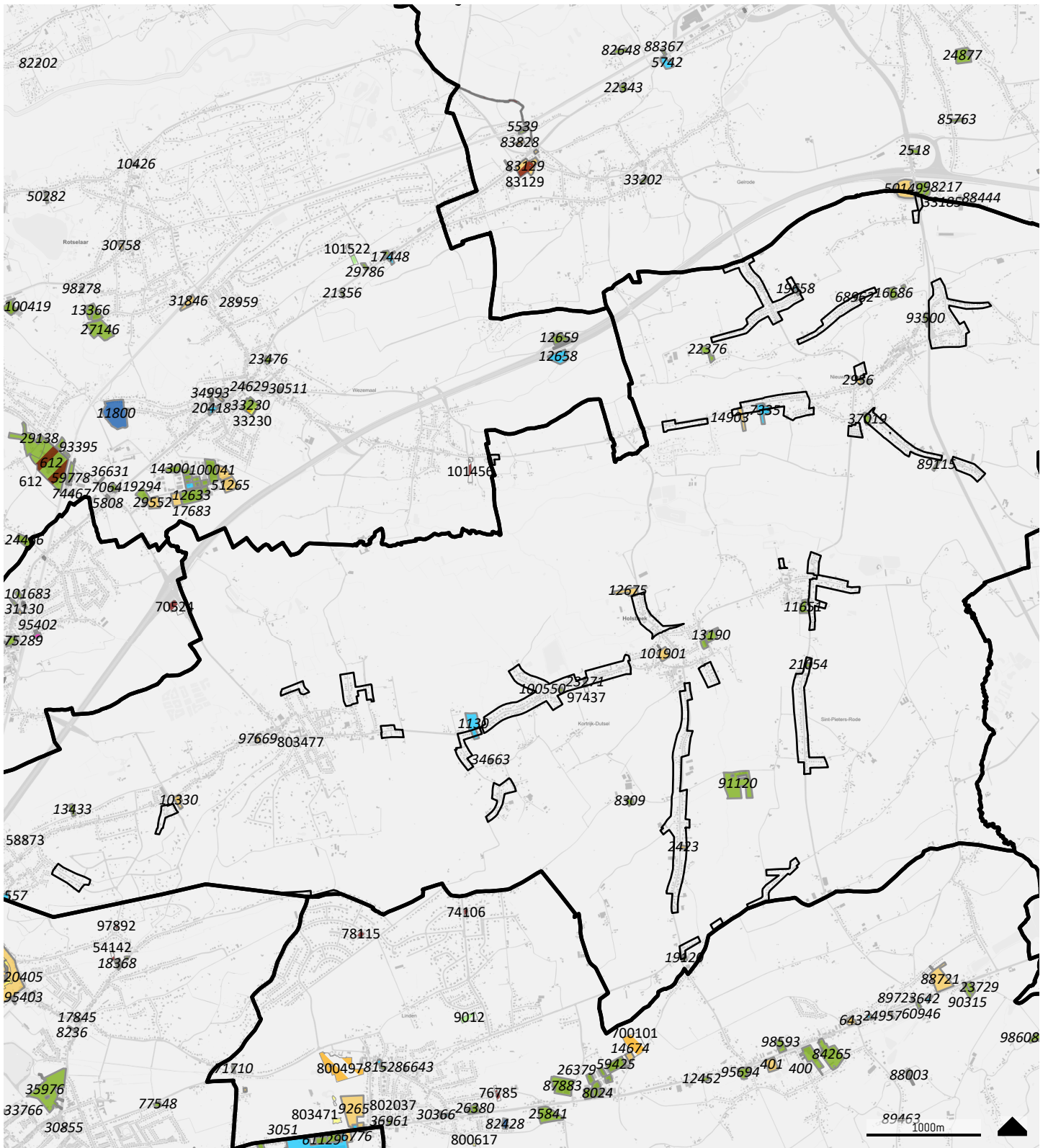
RUP woongebieden buiten de dorpskernen  
Holsbeek

16

**BODEMKAART**












- |                          |                     |
|--------------------------|---------------------|
| plangebied               | Vochtig zandleem    |
| gemeentegrens            | Droge zandleem      |
| <u>bodemkaart</u>        |                     |
| Antropogeen              | Natte leem          |
| Nat zand                 | Vochtige leem       |
| Vochtig zand             | Natte klei          |
| Droog zand               | Vochtige klei       |
| Nat zand antropogeen     | Klei-complexen      |
| Vochtig zand antropogeen | Vochtige Zware Klei |
| Droog zand antropogeen   | Zware Klei-complex  |
| Nat zandleem             | Veen                |
|                          | Landduin            |

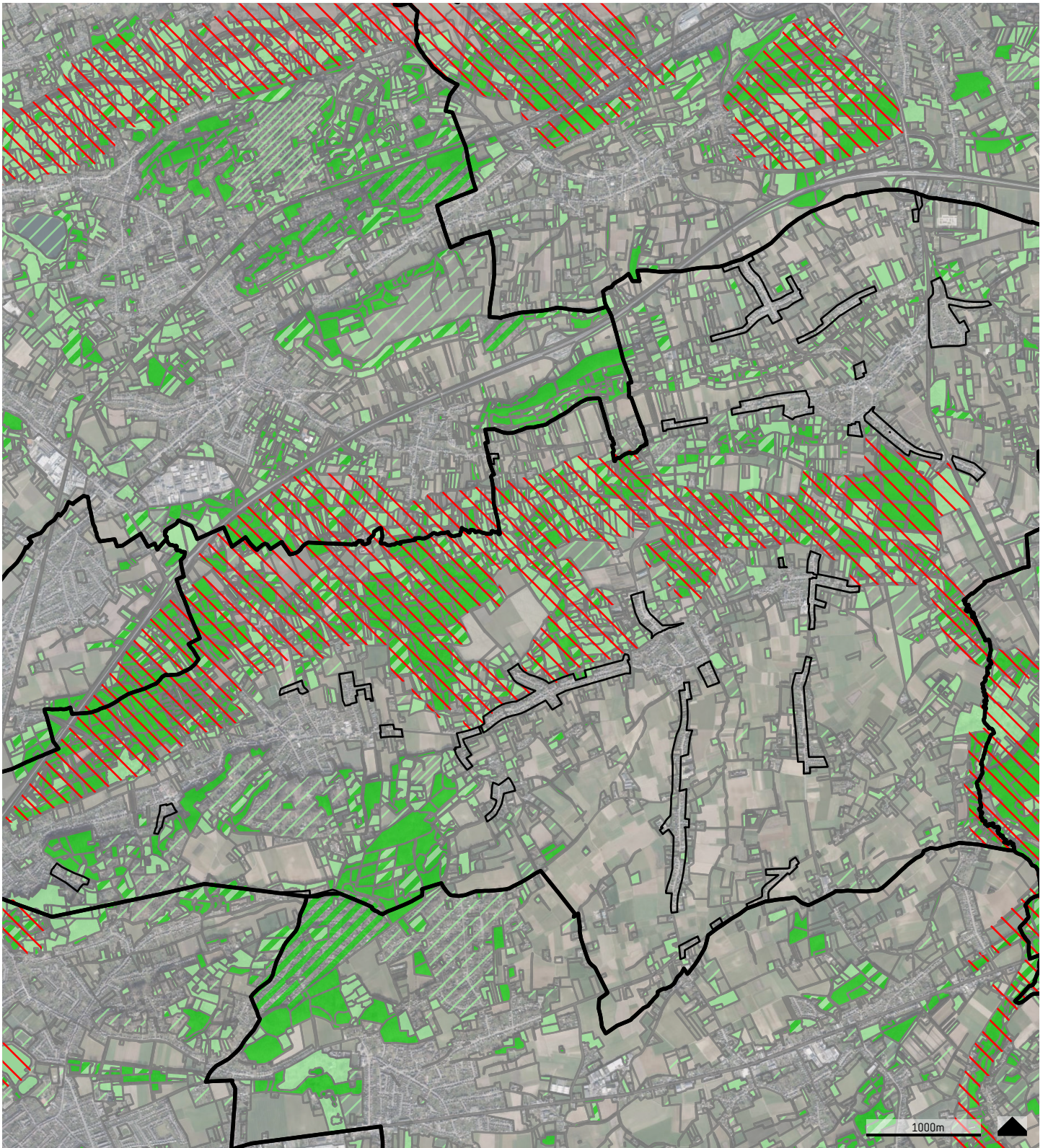




Bron: WMS SRB, WFS MercatorNet - download WFS-data dd 7/12/2023

RUP woongebieden buiten de dorpskernen  
Holsbeek  
**17**  
**BODEMONDERZOEK OVAM**

- |                                                                                                                 |                                                                                                                 |
|-----------------------------------------------------------------------------------------------------------------|-----------------------------------------------------------------------------------------------------------------|
|  gemeentegrens                | <u>bodemonderzoeken en saneringen</u>                                                                           |
|  plangebied                   |  Sitebesluit                 |
| <u>schadegevallen en meldingen</u>                                                                              |  Oriënterend bodemonderzoek  |
|  Evaluatierapport schadegeval |  Beschrijvend bodemonderzoek |
|  Melding schadegeval          |  Bodemsaneringsproject       |
|  Vaststelling schadegeval     |  Eindevaluatieonderzoek      |
|  Melding bodemverontreiniging |                                                                                                                 |


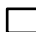



bron: orthofotoomazieek, middenschichtig, winteropnamen, Albur, meest recent, Vlaanderen, WFS AIV: IN60, BWK versie 2, 2018 - download WFS-data dd. 4/12/2023








RUP woongebieden buiten de dorpskernen  
Holsbeek

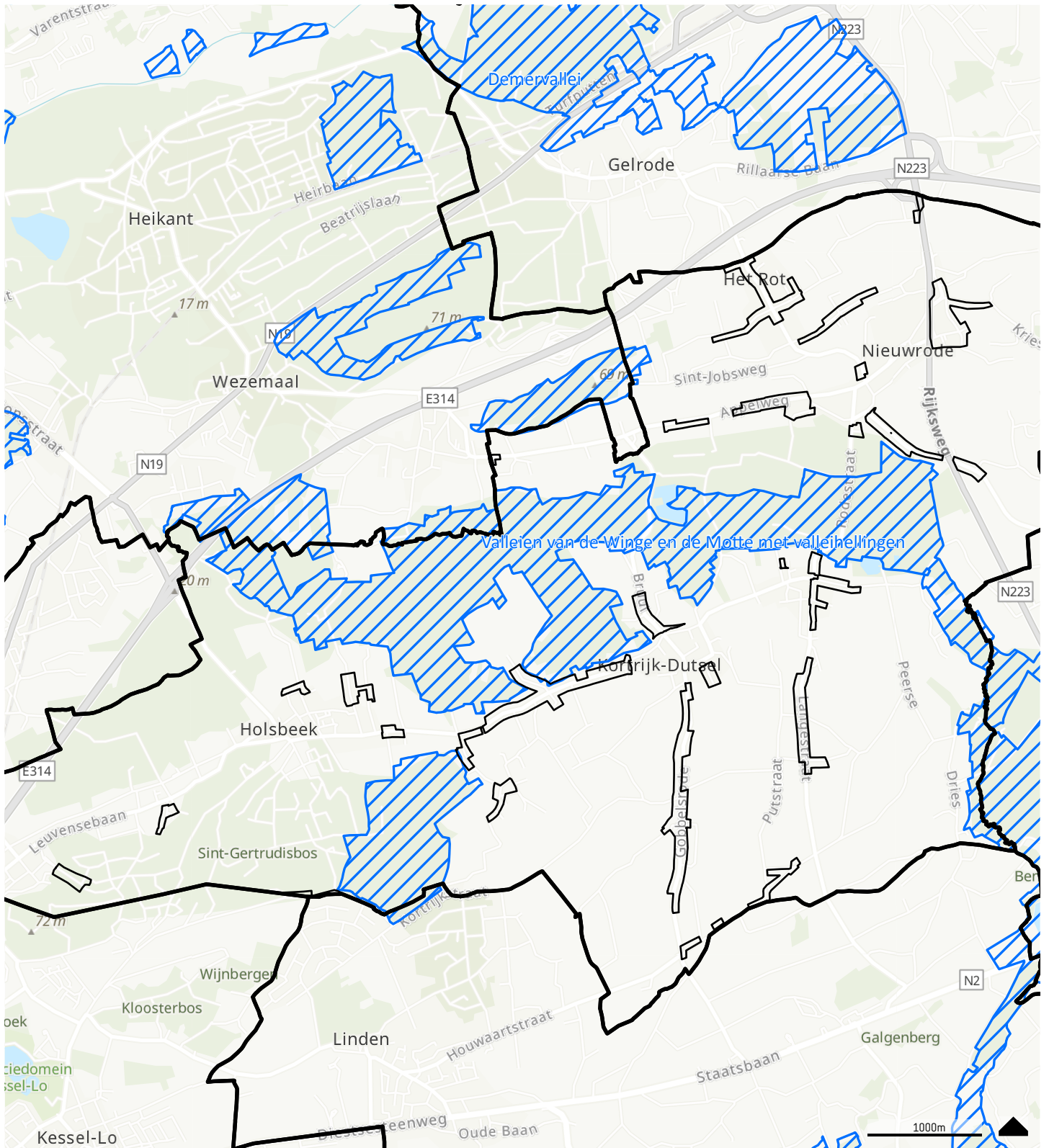
18

# BIOLOGISCHE WAARDERINGSKAART

-  gemeentegrens
-  plangebied
-  belangrijke faunistische waarde

BWK-zone:

-  Biologisch minder waardevol
-  Complex van biologisch minder waardevolle en waardevolle elementen
-  Complex van biologisch minder waardevolle, waardevolle en zeer waardevolle elementen
-  Complex van biologisch minder waardevolle en zeer waardevolle elementen
-  Biologisch waardevol
-  Complex van biologisch waardevolle en zeer waardevolle elementen
-  Biologisch zeer waardevol



Bron: ESRI, DeLorme, NAVTEQ, canvas world light gray base; WFS Mercator/Wet, WFS PDOK (NL) - download WFS-data dd. 4/12/2023

RUP woongebieden buiten de dorpskernen  
Holsbeek  
19  
**NATURA 2000**

gemeentegrens

plangebied

Natura 2000:

Habitatrichtlijngebieden

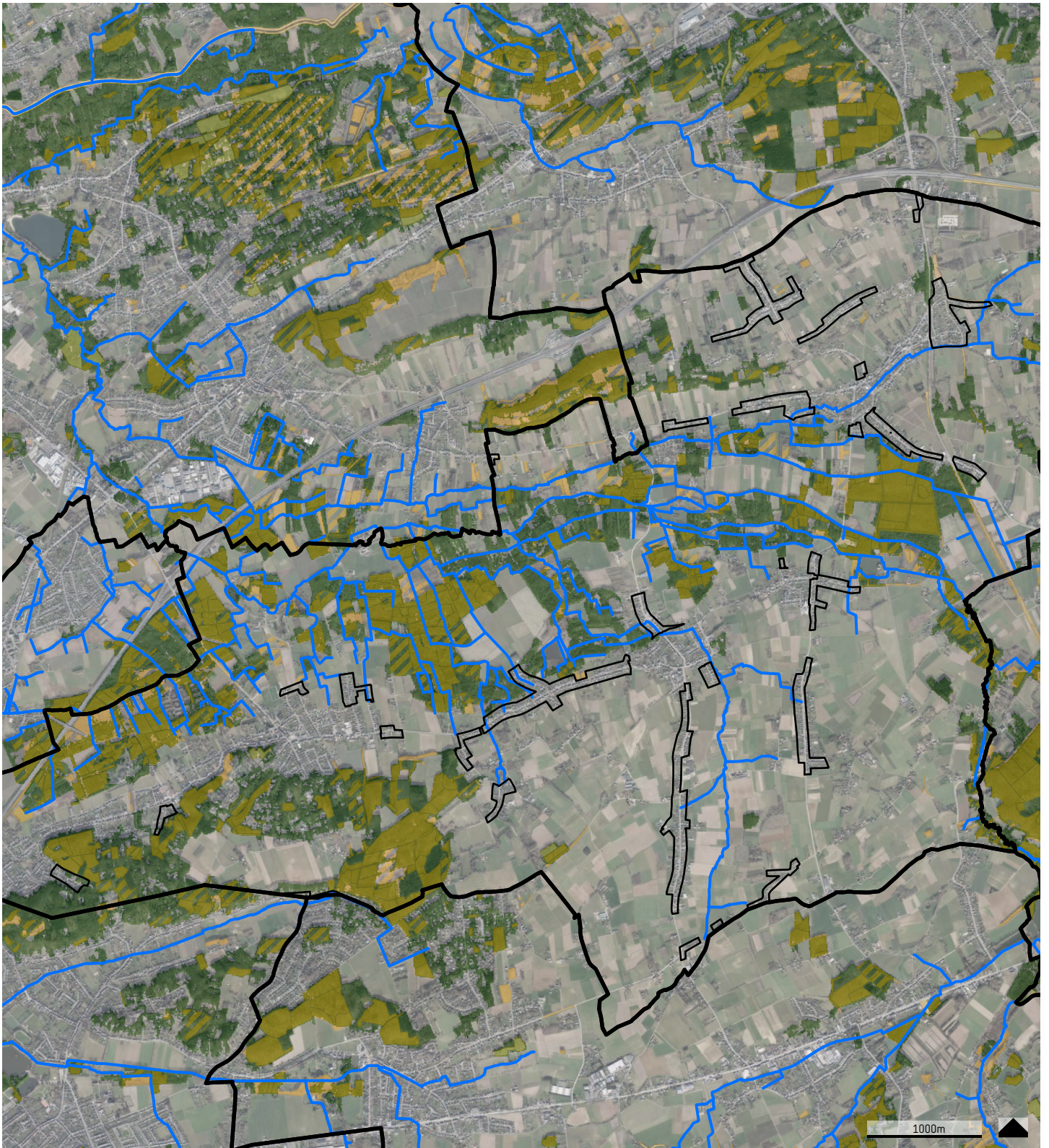
Vogelrichtlijngebieden

Ramsar

Duinendecreet:

Beschermd duingebied

Voor het duingebied belangrijk landbouwgebied

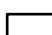








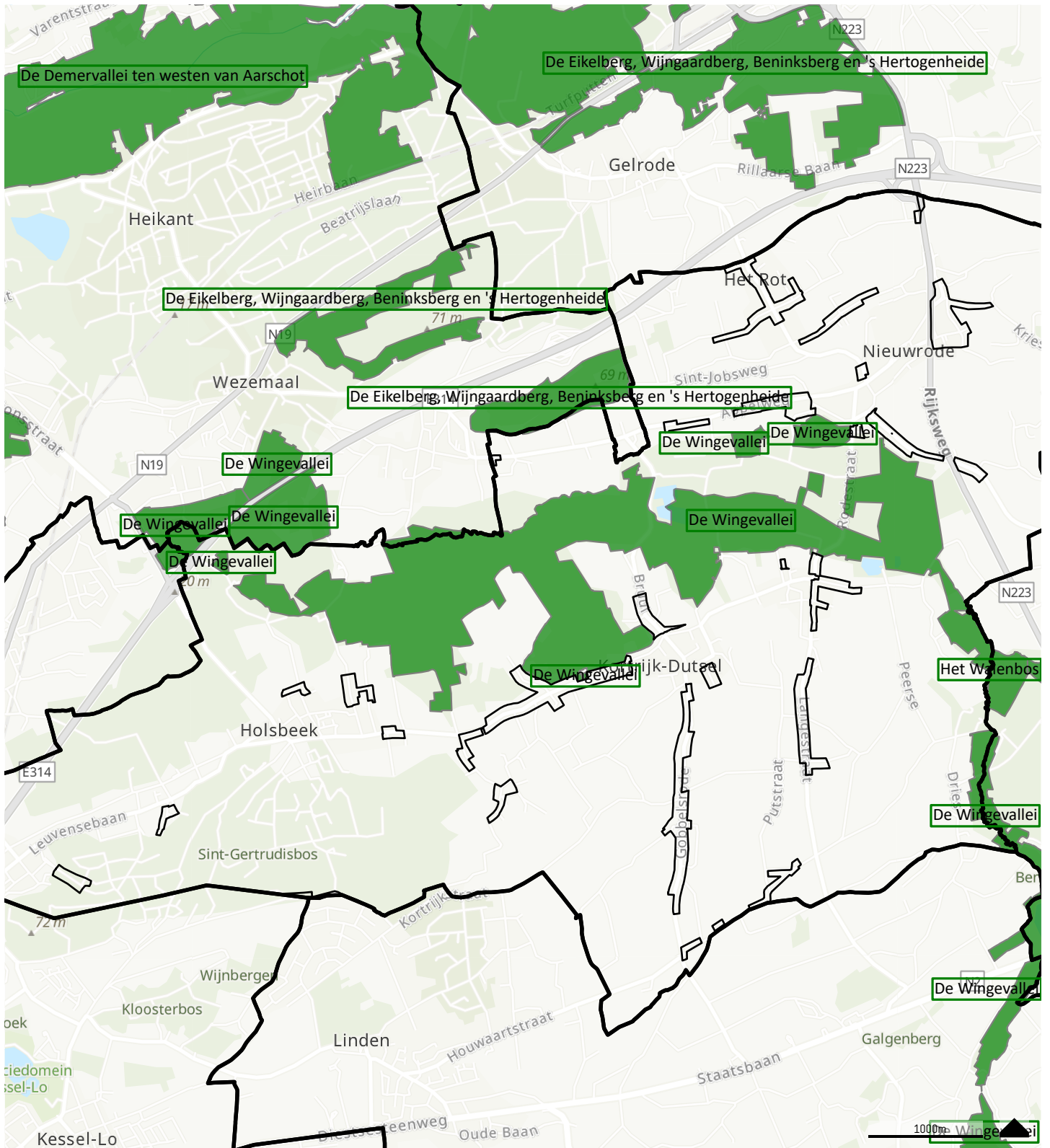
bron: orthofotoLandsat, middenschotig, winteropnamen, kibur, meest recent, Vlaanderen, WFS AV: INd0, BWK versie 2, 2016; Boswijzer 2018, VHA WFS MercatorNet - download WFS-data dd. 4/12/2023

RUP woongebieden buiten de dorpskernen  
Holsbeek

20






## NATURA 2000 HABITAT EN BOSWIJZER

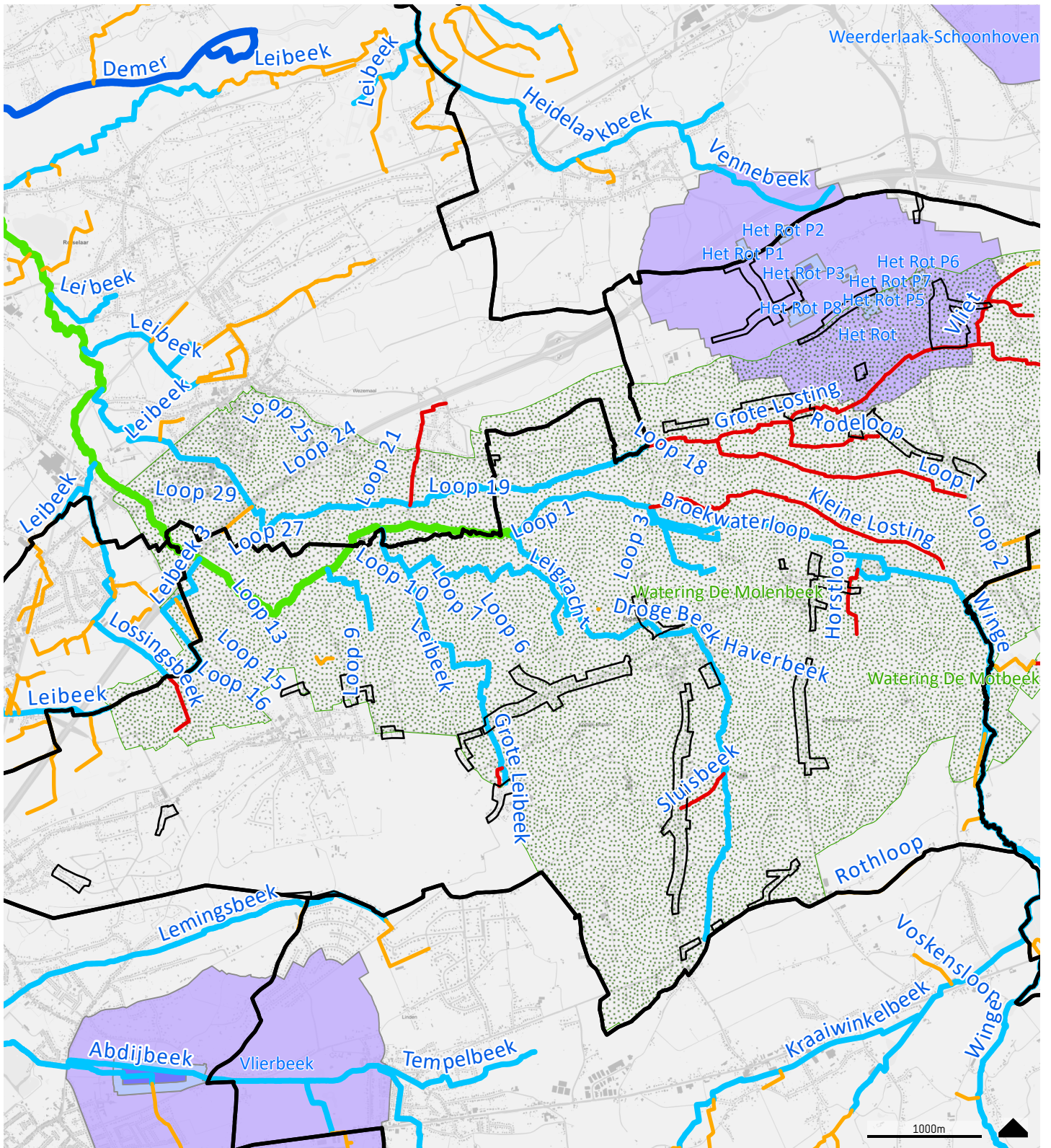
- |                                                                                                   |                                                                                                     |
|---------------------------------------------------------------------------------------------------|-----------------------------------------------------------------------------------------------------|
|  plangebied     | <u>BWK 2:</u>                                                                                       |
|  gemeentegrens  |  Habitat         |
|  Bos            |  Onzeker habitat |
|  VHA-waterlopen |  Deels habitat   |



Bron: ESRI, Geonorme, NAVTEQ canvas world light gray base; AGIV, afbakering van het VEN (10/16) - download WFS-data dd. 4/12/2023

RUP woongebieden buiten de dorpskernen  
Holsbeek  
**21**  
**VEN**

-  plangebied
-  gemeentegrens
- VEN/ IVON-gebied:**
-  Grote Eenheden Natuur
-  Grote Eenheden Natuur in Ontwikkeling
-  Natuurverwevingsgebied



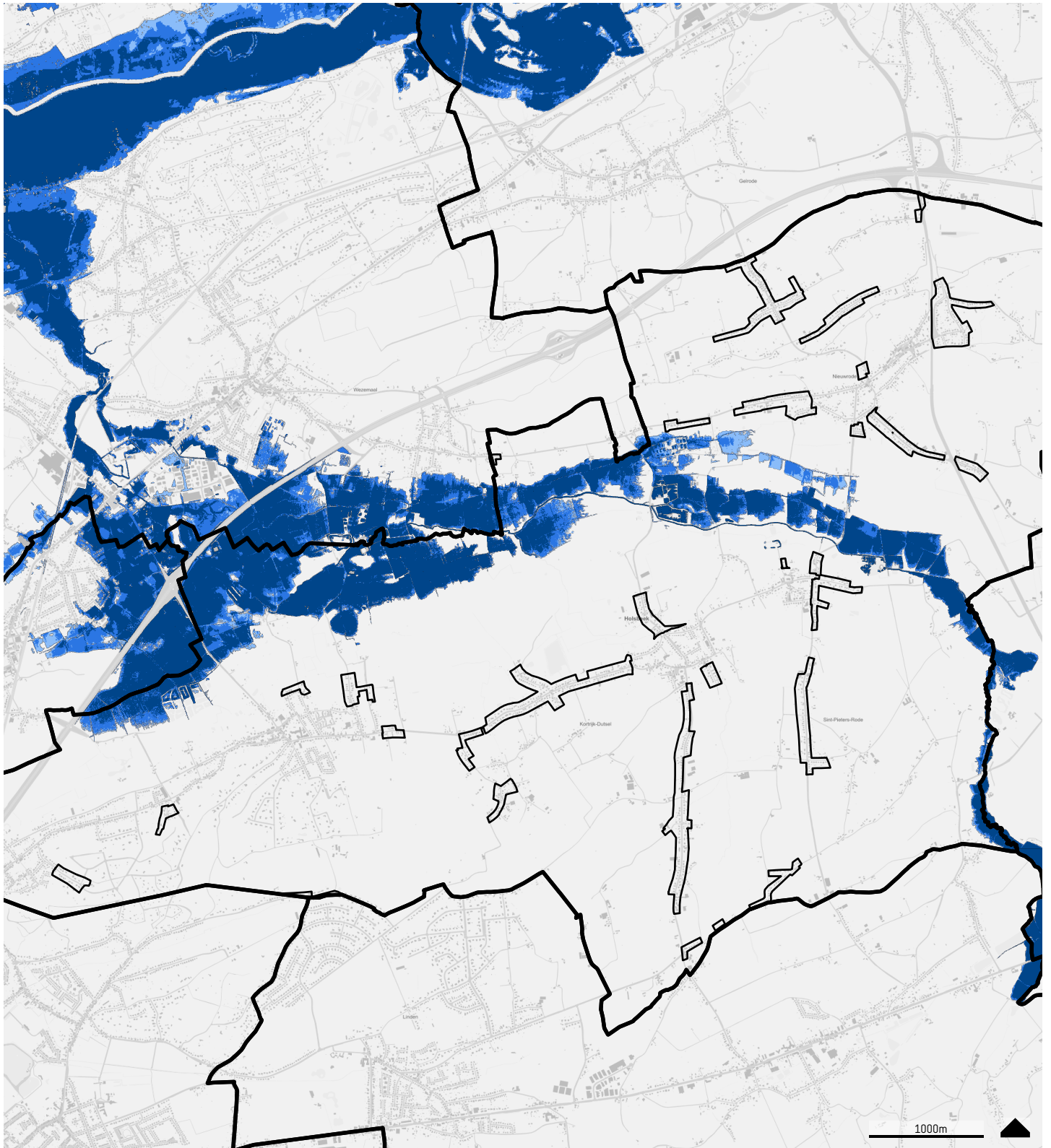
Bron: WMS GRB, WFS VHA, WFS DOW waterwingebieden en beschermingszones, WFS Polders en Wateringen - download WFS-data dd. 4/12/2023

RUP woongebieden buiten de dorpskernen  
Holsbeek

22

**VLAAMSE HYDROGRAFISCHE  
ATLAS**

- |                               |                           |
|-------------------------------|---------------------------|
| gemeentegrens                 | Polder                    |
| plangebied                    | Watering                  |
| <b>VHA-waterlopen:</b>        |                           |
| Bevaarbaar                    | Winning                   |
| Geklasseerd, eerste categorie | Beschermingszone type I   |
| Geklasseerd, tweede categorie | Beschermingszone type II  |
| Geklasseerd, derde categorie  | Beschermingszone type III |
| Niet geklasseerd              |                           |





Bron: WMS GRB, <https://geoservice.waterinfo.be> - download WFS-dsio uu: 4/12/2023





RUP woongebieden buiten de dorpskernen  
Holsbeek

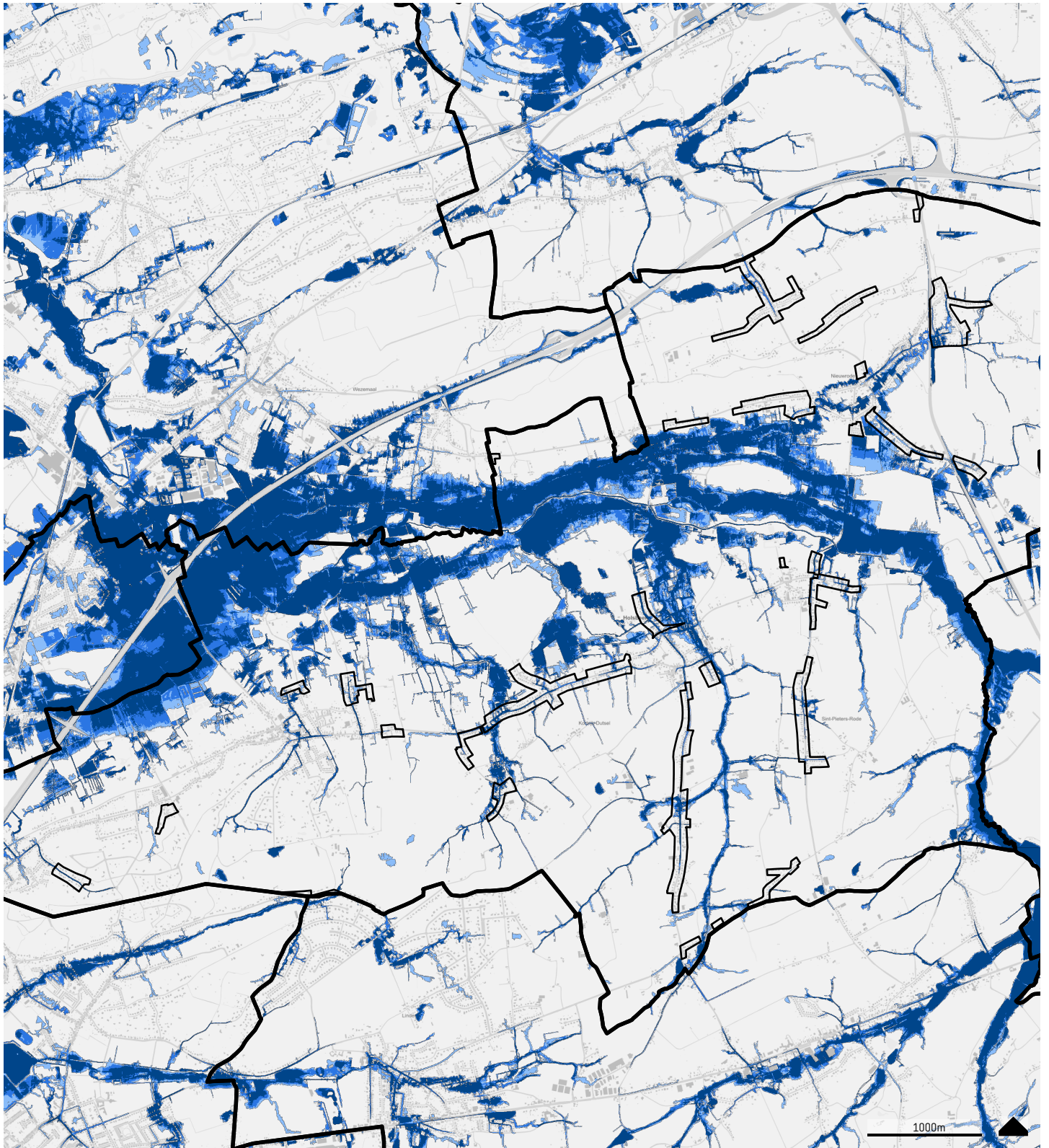
23A

## OVERSTROMINGSGEVOELIGE GEBIEDEN FLUVIAAL

-  gemeentegrens
-  plangebied

### Nieuwe watertoets - Overstromingsgevoelige gebieden fluviaal

-  A - Geen overstroming gemodelleerd
-  B - Kleine kans op overstromingen onder klimaatverandering
-  C - Kleine kans op overstromingen
-  D - Middelgrote kans op overstromingen




bron: WMS GRB, [https://geoservice.waterinfo.be/download/WFS-doio.00\\_4.12/2023](https://geoservice.waterinfo.be/download/WFS-doio.00_4.12/2023)

RUP woongebieden buiten de dorpskernen  
Holsbeek


23B


## OVERSTROMINGSGEVOELIGE GEBIEDEN PLUVIAAL


 plangebied


 gemeentegrens

**Nieuwe watertoets - Overstromingsgevoelige gebieden pluviaal**

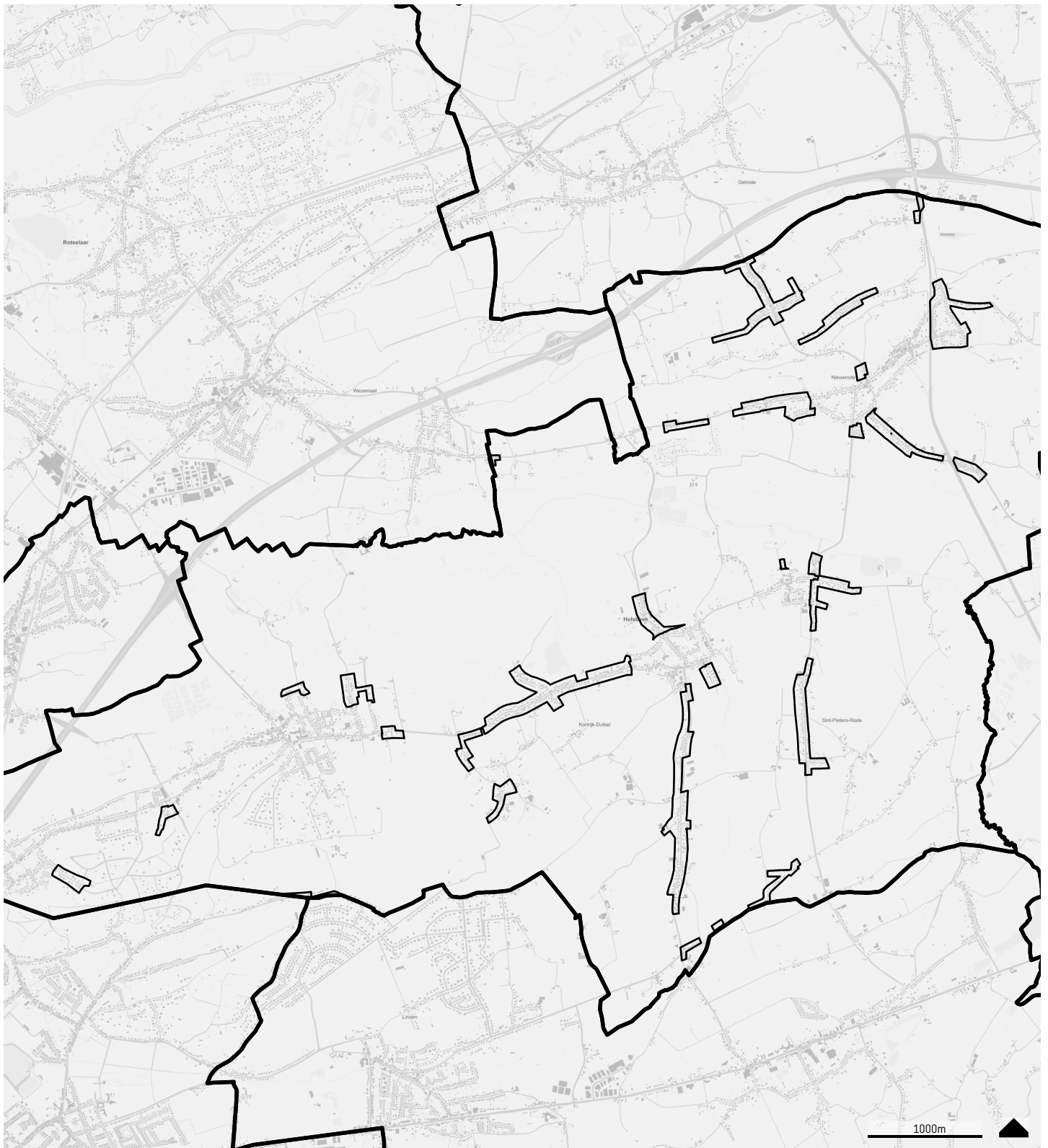
 A - Geen overstroming gemodelleerd

 B - Kleine kans op overstromingen onder klimaatverandering

 C - Kleine kans op overstromingen

 D - Middelgrote kans op overstromingen







Bron: WMS SRB, <https://geoservice.waterinfo.be> - download WFS-data uu: 4/12/2023





RUP woongebieden buiten de dorpskernen  
Holsbeek

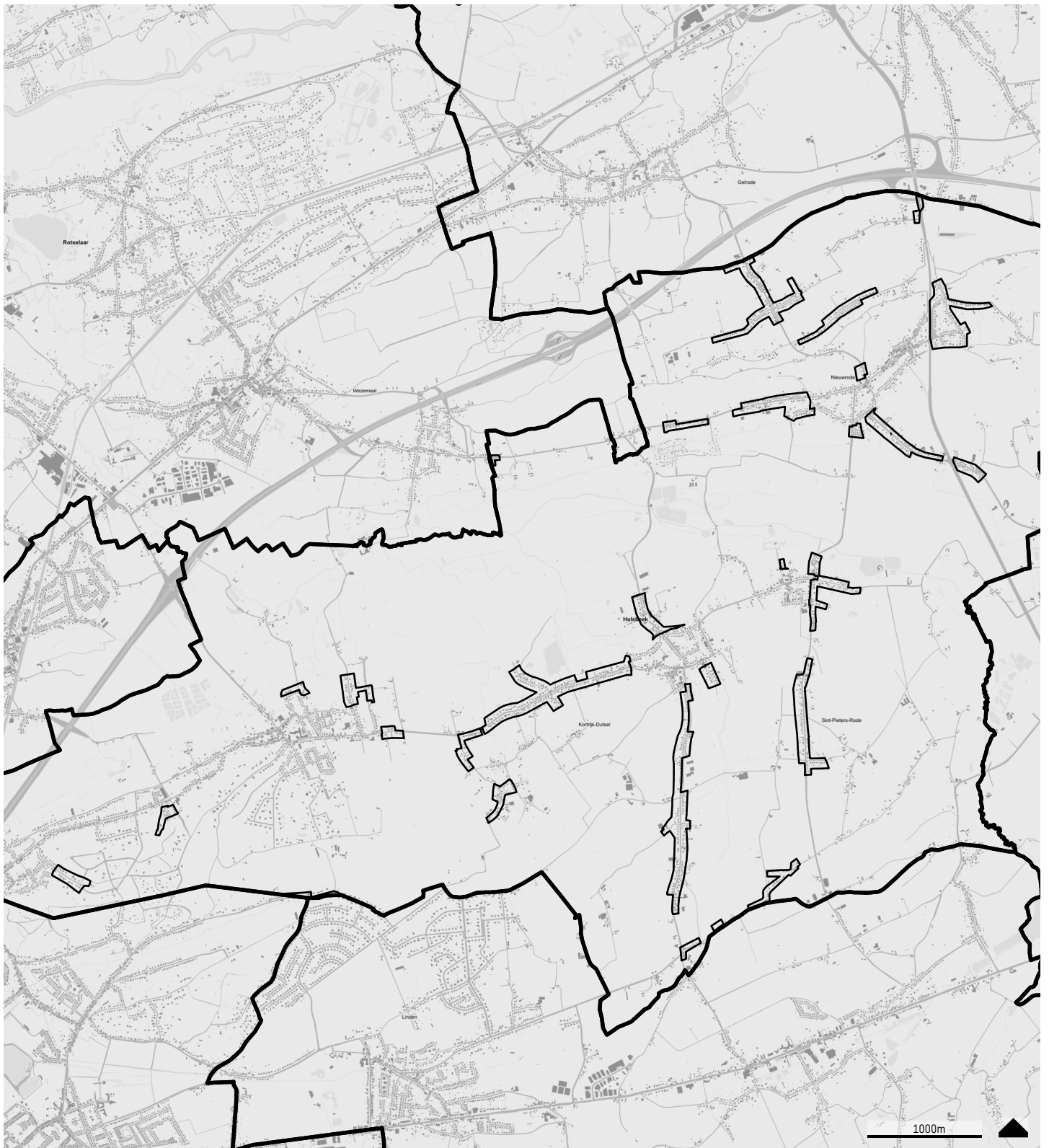
24

## OVERSTROMINGSGEVOELIGE GEBIEDEN VANUIT DE ZEE

-  gemeentegrens
-  plangebied

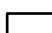

### Nieuwe watertoets - Overstromingsgevoelige gebieden vanuit de zee

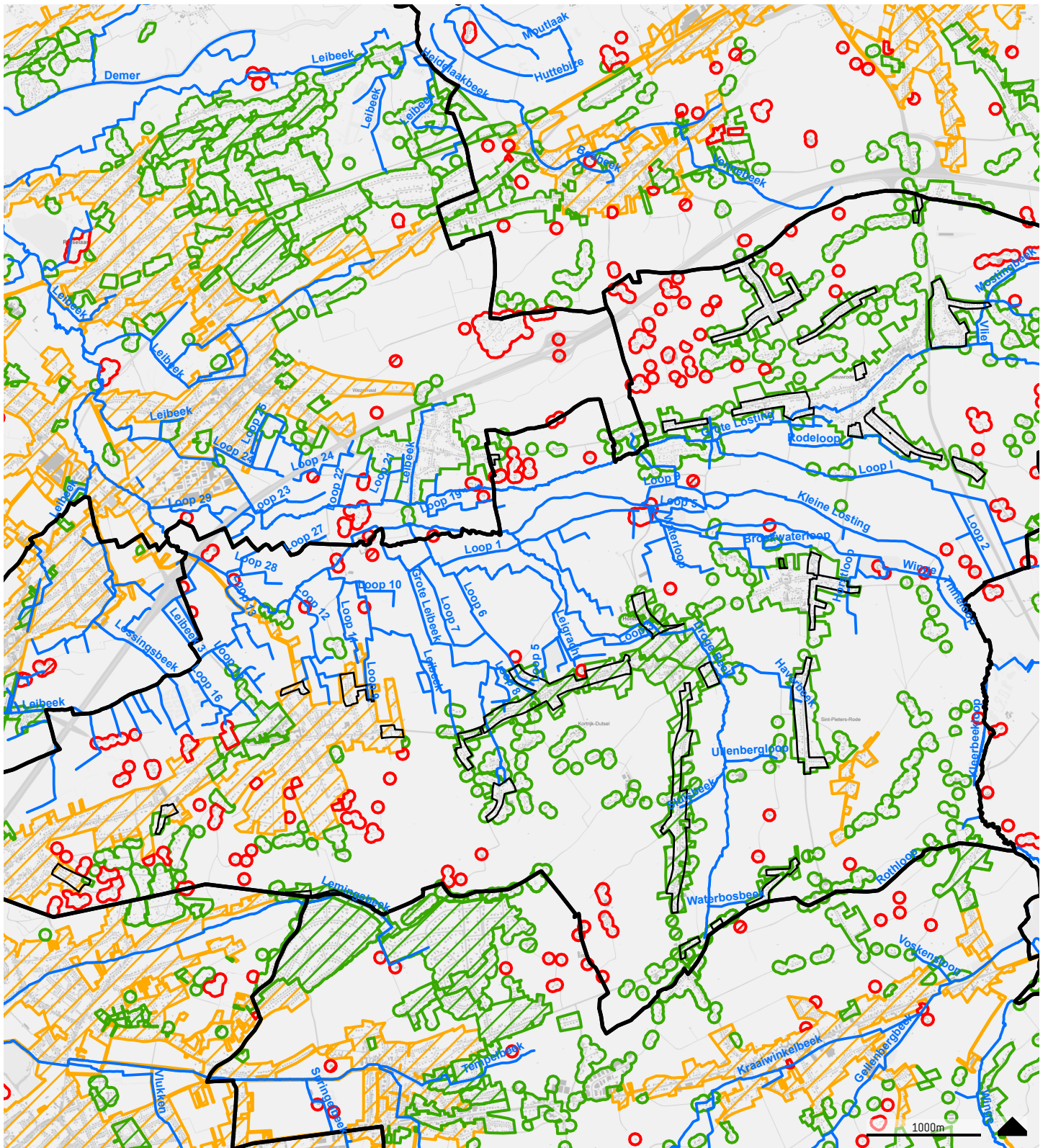
-  A - Geen overstroming gemodelleerd
-  B - Kleine kans op overstromingen onder klimaatverandering
-  C - Kleine kans op overstromingen
-  D - Middelgrote kans op overstromingen



bron: WMS GIS, WMS VMM Signaalgebieden

RUP woongebieden buiten de dorpskernen  
 Holsbeek  
 25  
**VMM SIGNAALGEBIEDEN**

-  plangebied
-  gemeentegrens













bron: WMS GRB, WFS MercatorNet VHA, WMS VMM Stroomgebiedbeheerplannen - Zoneringen - download WFS-data dd. 4/12/2023

RUP woongebieden buiten de dorpskernen  
Holsbeek

26

VMM ZONERINGEN

-  gemeentegrens
-  plangebied
-  VHA-waterlopen
-  Woonkernen
-  Collectief geoptimaliseerd buitengebied
-  Collectief te optimaliseren buitengebied
-  Individueel te optimaliseren buitengebied - IBA aanwezig
-  Individueel te optimaliseren buitengebied - IBA gepland
-  Individueel te optimaliseren buitengebied - gesloten opvangsysteem aanwezig
-  Individueel te optimaliseren buitengebied - gesloten opvangsysteem gepland